






## 2 Telford Close Dora Creek NSW

5  2  2 

From the light-filled living to the practical kitchen and dining spaces, this solid family home presents an ideal opportunity to enter the property market, upsize or build your investment portfolio. Dust off your tools and freshen it up or enjoy as is the potential is enormous.

Sitting on a comfortable 790m<sup>2</sup> (approx.) allotment, 2 Telford Close is ideally located in a quiet pocket in Dora Creek and provides spacious living both inside and out. The practical floorplan delivers space for growing families with its five bedrooms with plenty of outdoor space for the children.

Featuring:

Practical kitchen/dining with plenty of storage, pantry and electric cooking

Built in robes to three of the bedrooms

**Type** : House  
**Price** : \$ 685,000  
**Land Size** : 790 sqm  
**View** : <https://www.renshaw.realestate/sale/nsw/lake-macquarie-west/dora-creek/residential/house/8078195>

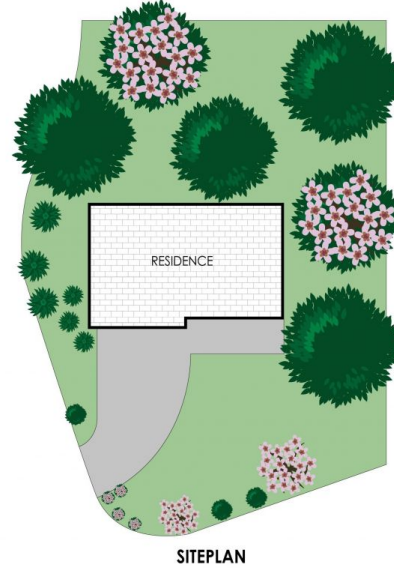
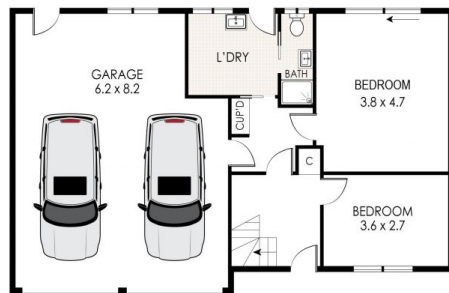


**Brad Renshaw**  
 02 4977 3555

[For full version visit the website](https://www.renshaw.realestate)



## 2 Telford Close, Dora Creek



**NOTE:** Every precaution has been taken to verify the accuracy of the above details. However, prospective purchasers are advised to make their own enquiries.