



## 16 Pims Close Bonnells Bay NSW

4  2  2 

Discover an exceptional opportunity to secure a beautifully presented home where every detail has been thoughtfully upgraded and is ready for you to move in and enjoy. Perfectly positioned in one of Bonnells Bay's most desirable neighbourhoods, this property offers easy walking access to the stunning shores of Lake Macquarie and is surrounded by high-quality homes.

Set amidst beautifully established gardens, this residence is a true sanctuary, offering both tranquillity and elegance. Boasting four bedrooms and multiple formal and casual living areas, it's designed to cater to the needs of the entire family.

Property Highlights:

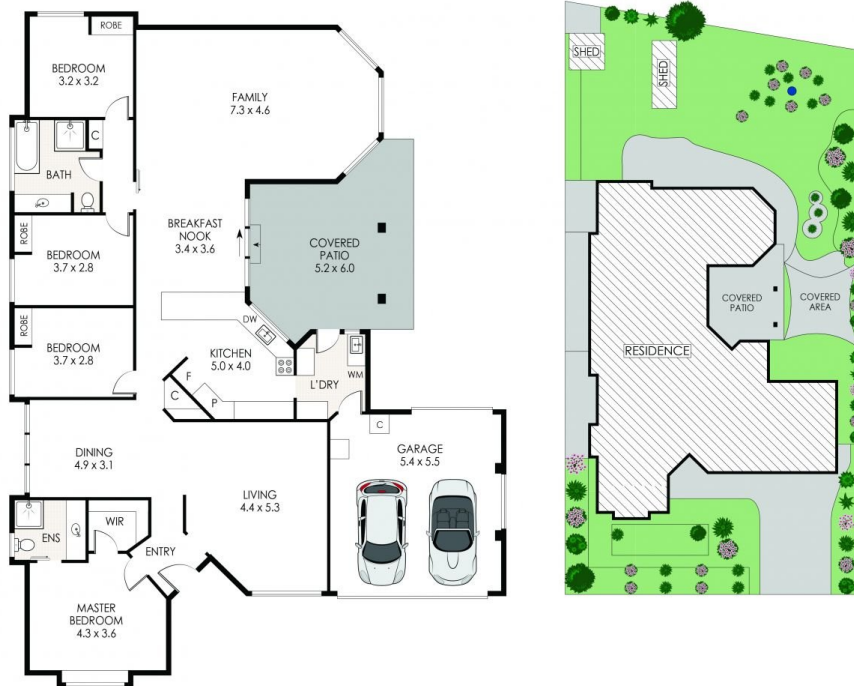
[For full version visit the website](https://www.renshaw.realestate)

**Type** : House  
**Price** : NEW TO MARKET  
**Land Size** : 707.6 sqm  
**View** : <https://www.renshaw.realestate/sale/nsw/lake-macquarie-west/bonnells-bay/residential/house/8210526>



**Brad Renshaw**  
 02 4977 3555

## 16 Pims Close, Bonnells Bay



**NOTE:** Every precaution has been taken to verify the accuracy of the above details. However, prospective purchasers are advised to make their own enquiries.